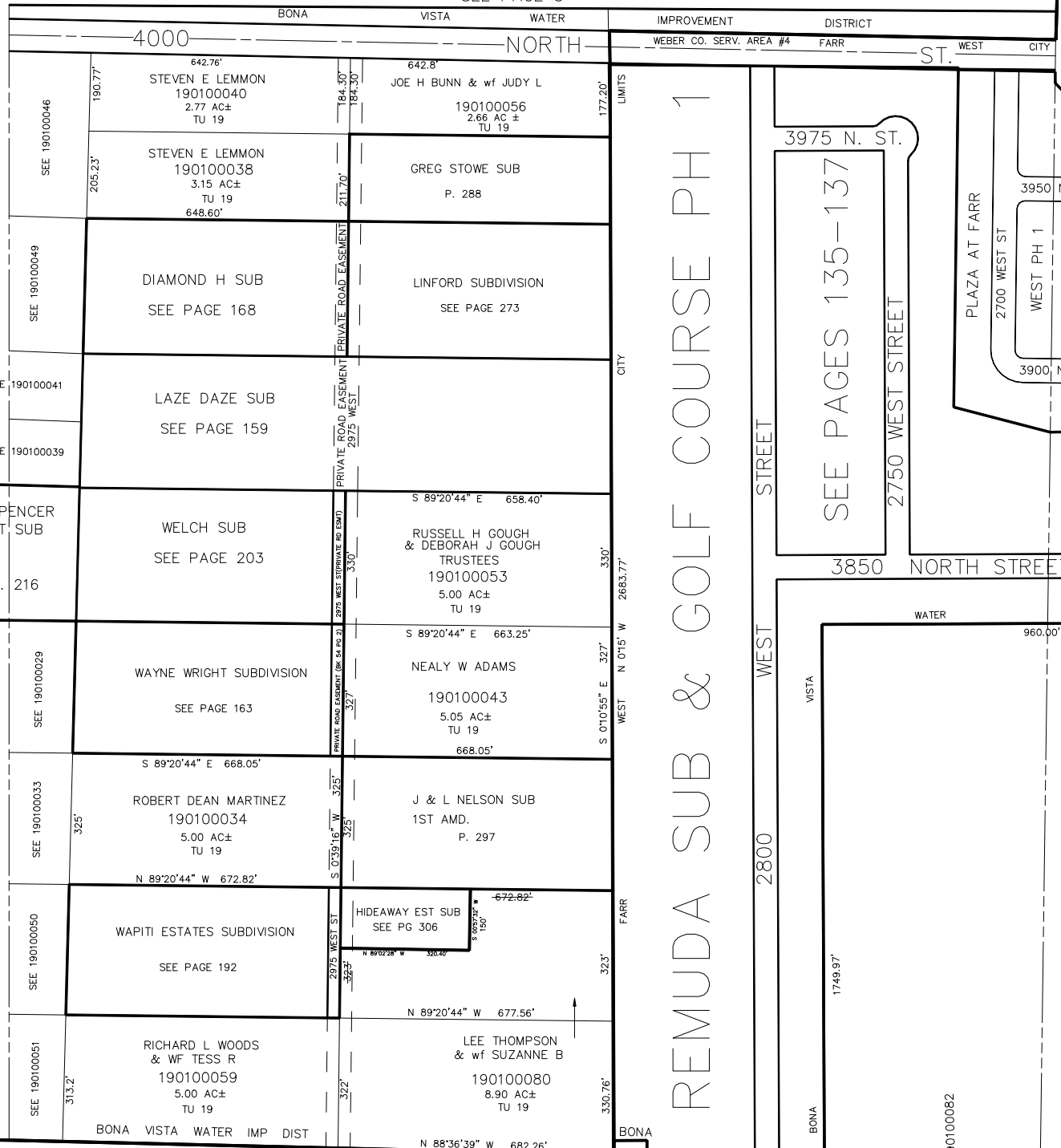


N.E. 1/4
SECTION 22, T.7N., R.2W., S.L.B. & M.

IN WEBER COUNTY
SCALE 1" = 200'
SEE PAGE 3

TAXING UNIT: 19, 307, 308



PLAIN CITY WEST WEBER CO. SERV. AREA #4 CITY LIMITS

19 REMUDA SUB AND GOLF COURSE PH 3 SEE P. 166 & 167

SEE PG. 10-1

SEE P. 216

SEE PAGES 135-137

SEE PG. 11

SEE 190100082

SEE PAGE 10

KBR 03-93